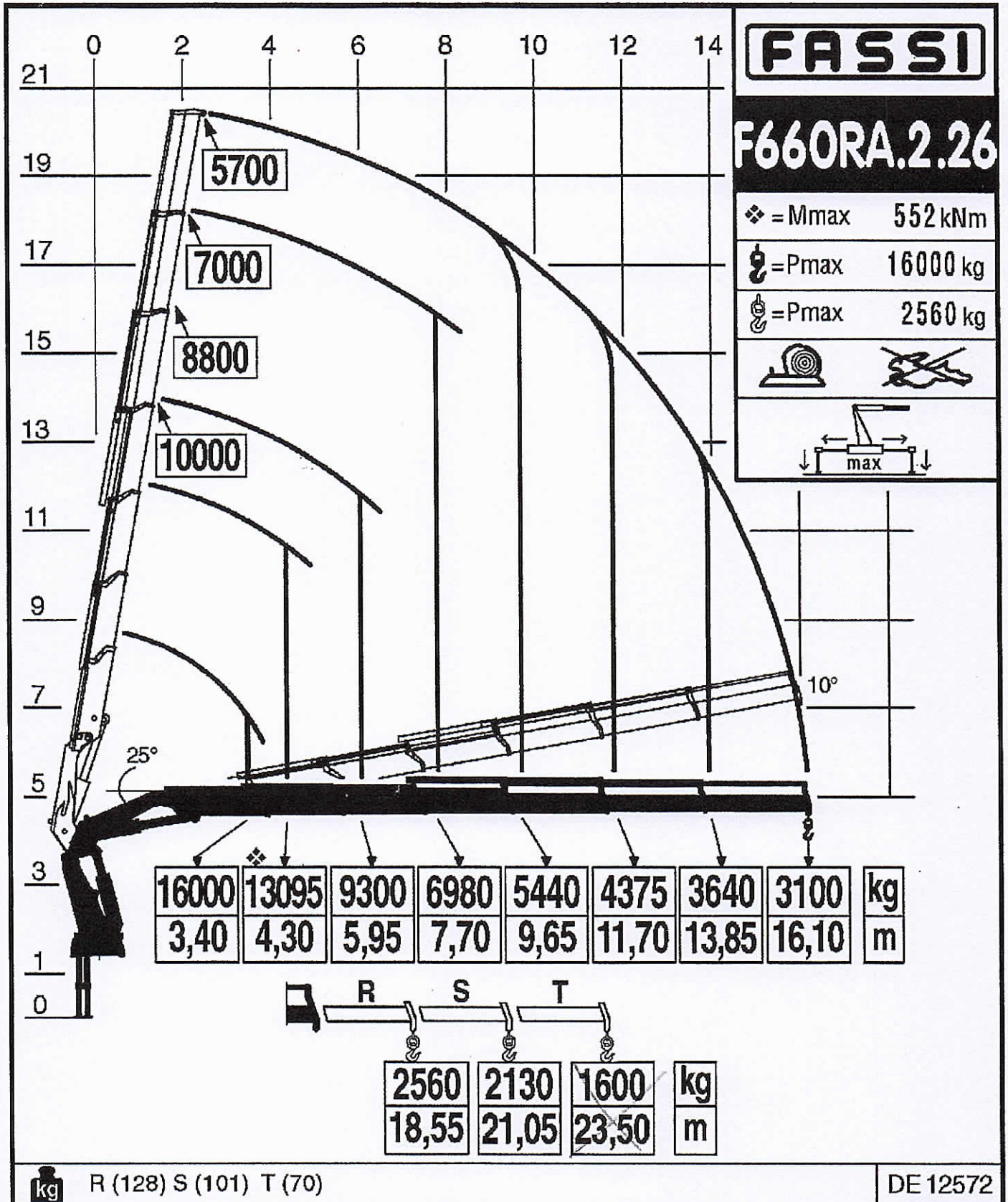


Via Roma, 110
14021 Albino (BG)
Tel.: +39 035 776400
Fax: +39 035 755020
www.fassi.com
fassi@fassi.com

LOAD DIAGRAM WITH LIFTING MOMENT LIMITING DEVICE



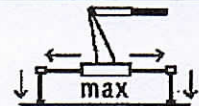
FASSI

F660RA.2.26

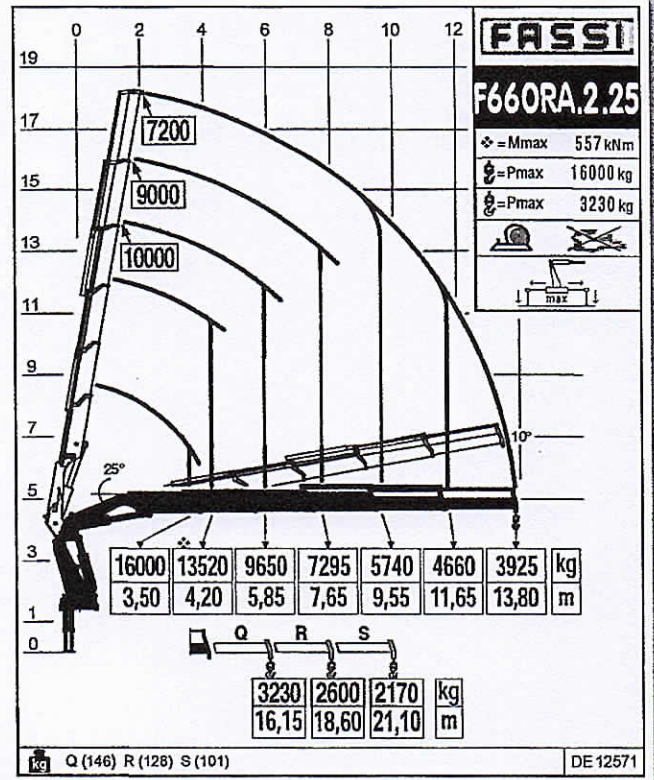
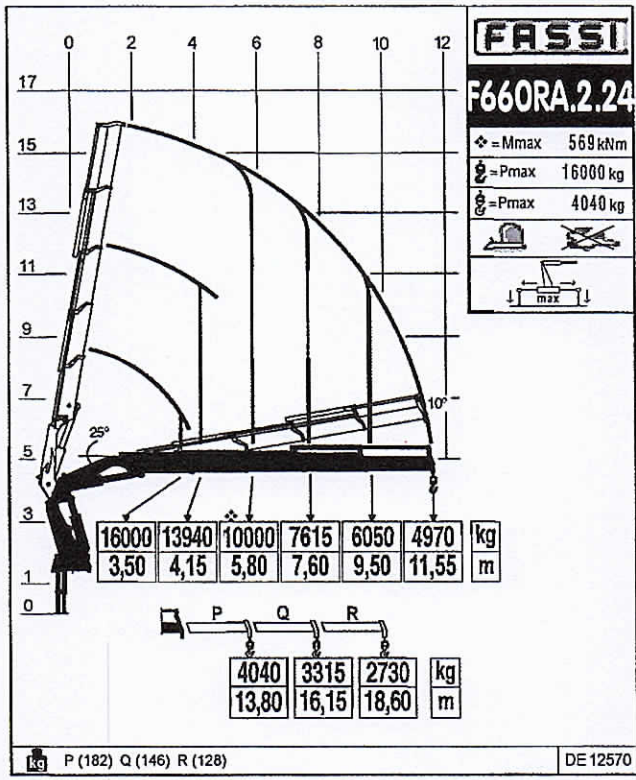
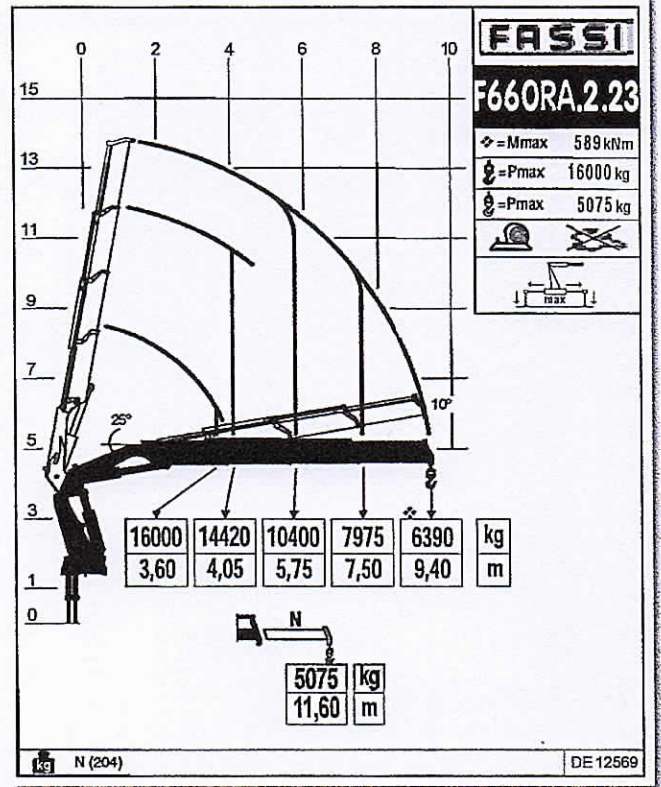
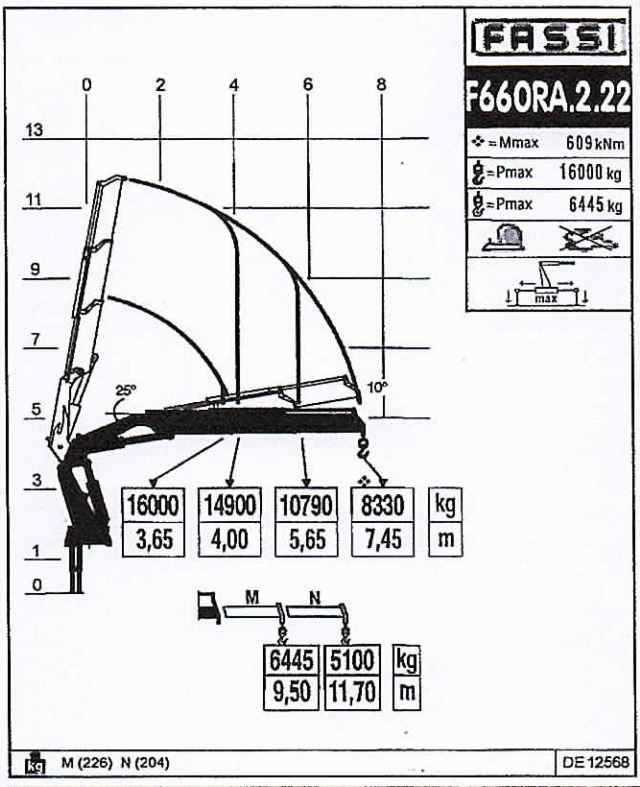
❖ = Mmax 552 kNm

⚙ = Pmax 16000 kg

⚙ = Pmax 2560 kg



DE 12572



GB Dynamic load diagrams calculated, tested and certified to lift the loads at the declared reaches
 IT Diagrammi di portata dinamica calcolati, collaudati e certificati per sollevare i carichi agli sbracci dichiarati
 FR Diagrammes de charge dynamique calculés, testés et certifiés pour soulever les charges aux extensions déclarées

DE Dynamische Lastdiagramme sind berechnet, getestet und garantieren das Heben der Last bei angegebener Entfernung
 ES Diagramas de carga dinámicos, calculados, probados y certificados para elevación de las cargas a los alcances declarados
 NL Dynamische last-vluchttafelen berekend, getest en gecertificeerd om de lasten te hijsen op de verklaarde bereiken

F660RA.2

Technical data

kg/m													
	kNm	tm	m	m	°	kNm	MPa	l/min	l	kg	mm	mm	mm
F660RA.2.22	609	62,08	7,70	3,40	360 CONTINUOUS	45,0	34,0	70 / 80	250	5135	2505	1520	2465
F660RA.2.23	589	60,04	9,70	5,35	360 CONTINUOUS	45,0	34,0	70 / 80	250	5470	2505	1590	2465
F660RA.2.24	569	58,00	11,85	7,40	360 CONTINUOUS	45,0	34,0	70 / 80	250	5800	2505	1590	2465
F660RA.2.25	557	56,78	14,10	9,60	360 CONTINUOUS	45,0	34,0	70 / 80	250	6110	2505	1590	2465
F660RA.2.26	552	56,27	16,40	11,80	360 CONTINUOUS	45,0	34,0	70 / 80	250	6400	2550	1590	2465
F660RA.2.27	549	55,96	18,55	13,80	360 CONTINUOUS	45,0	34,0	70 / 80	250	6610	2550	1670	2465
F660RA.2.28	543	55,35	20,60	15,80	360 CONTINUOUS	45,0	34,0	70 / 80	250	6790	2550	1670	2465
F660RA.2.28/L214	543	55,35	30,45	23,10	360 CONTINUOUS	45,0	34,0	70 / 80	250	7448	2550	1840	2840

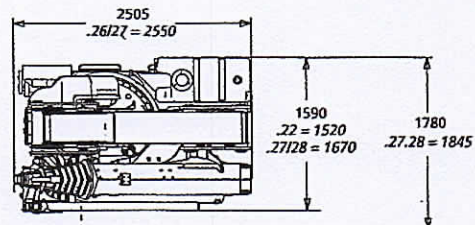
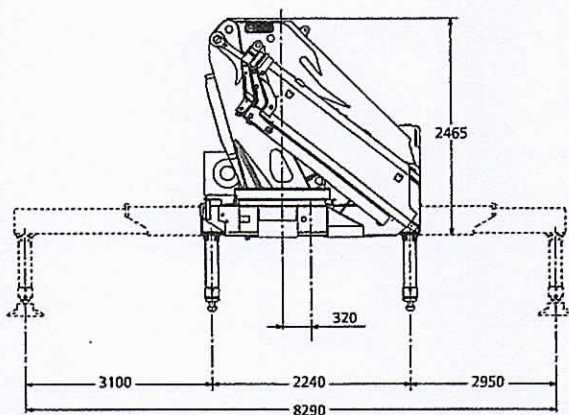
GB / The range of versions available also includes: - IT / La gamma delle versioni disponibili include anche: - FR / La gamme de versions disponibles inclut également: DE / Der Bereich der Versionen erhältlich umfasst auch: - ES / La gama de versiones disponibles también incluye: - NL / Het bereik van versies beschikbaar omvat ook:

F660RA.2.25 L414, F660RA.2.25 L515, F660RA.2.25 L516, F660RA.2.26 L414, F660RA.2.26 L425, F660RA.2.26 L426, F660RA.2.27 L214, F660RA.2.27 L425, F660RA.2.27 L426

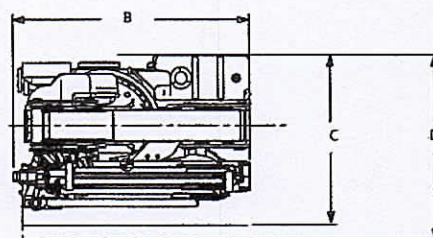
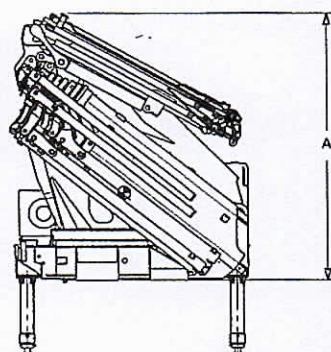
kg/m													
	kNm	tm	m	m	°	kNm	MPa	l/min	l	kg	mm	mm	mm
F660RA.2.25/L414	508	51,78	23,85	16,20	360 CONTINUOUS	45,0	34,0	70 / 80	250	7075	2510	1760	2865
F660RA.2.25/L515	508	51,78	24,30	16,80	360 CONTINUOUS	45,0	34,0	70 / 80	250	7410	2535	1760	2750
F660RA.2.25/L516	508	51,78	26,10	18,55	360 CONTINUOUS	45,0	34,0	70 / 80	250	7510	2535	1760	2750
F660RA.2.26/L414	503	51,27	26,05	18,45	360 CONTINUOUS	45,0	34,0	70 / 80	250	7350	2550	1760	2865
F660RA.2.26/L425	503	51,27	26,55	19,05	360 CONTINUOUS	45,0	34,0	70 / 80	250	7500	2545	1760	2740
F660RA.2.26/L426	503	51,27	28,35	20,75	360 CONTINUOUS	45,0	34,0	70 / 80	250	7600	2545	1760	2740
F660RA.2.27/L214	499	50,87	28,40	21,10	360 CONTINUOUS	45,0	34,0	70 / 80	250	7390	2540	1840	2850
F660RA.2.27/L425	499	50,87	28,55	21,05	360 CONTINUOUS	45,0	34,0	70 / 80	250	7710	2535	1840	2795
F660RA.2.27/L426	499	50,87	30,35	22,75	360 CONTINUOUS	45,0	34,0	70 / 80	250	7810	2535	1840	2795

	Lifting capacity	Standard reach	Hydraulic extension	Rotation	Rotation torque	Working pressure	Pump capacity	Oil tank capacity	Crane weight	Crane width	Installation width	Crane height
	Capacità di sollevamento	Sbraccio standard	Estensione idraulica	Angolo di rotazione	Coppia di rotazione	Pressione d'esercizio	Portata della pompa	Capacità serbatoio olio	Peso gru	Larghezza gru	Larghezza di montaggio	Altezza gru
	Capacité de levage	Bras standard	Extension hydraulique	Rotation	Couple de rotation	Pression d'utilisation	Débit de la pompe	Capacité du réservoir d'huile	Poids de la grue	Largeur de la grue	Largeur de montage	Hauteur de la grue
	Hubmoment	Standardausladung	Ausladung hydr. Ausschub	Schwenkbereich	Schwenkmoment	Arbeitsdruck	Ölfördermenge	Öltankgröße	Eigengewicht des Std. Krane	Kranbreite	Einbaubreite	Kranhöhe
	Capacidad de elevación	Brazo standard	Extensión hidráulica	Ángulo de rotación	Potencia de rotación	Presión de trabajo	Capacidad de la bomba	Capacidad depósito aceite	Peso de la grúa	Anchura de la grúa	Anchura de montaje	Altura de la grúa
	Hefvermogen	Standaardarm	Hydraulische verlenging	Zwenkbereik	Draaimoment	Werkdruk	Pomp-opbrengst	Capaciteit van de olietank	Eigen gewicht	Kraanbreedte	inbouwbreedte	Kraanhoogte

F600RA he-dynamic



L SERIE



kg/m	A	B	C	D
	mm	mm	mm	mm
.25 L414	2865	2510	1760	1915
.25 L515/L516	2750	2535	1760	1915
.26 L414	2865	2550	1760	1915
.26 L425/L426	2740	2545	1760	1915
.27 L214	2850	2545	1840	1995
.27 L425/L426	2795	2535	1840	1995
.28 L214	2840	2550	1840	1995

L214	650 kg	L413	730 kg	L414	850 kg	L425	1100 kg	L426	1200 kg	L515	1300 kg	L516	1400 kg
PL	21 kg	NL	58 kg	PL	32 kg	QL	55 kg	RL	36 kg	QL	55 kg	RL	36 kg
		PL	32 kg	QL	22 kg	RL	36 kg	SL	25 kg	RL	36 kg	SL	25 kg
		QL	22 kg			SL	25 kg	TL	15 kg	SL	25 kg	TL	15 kg